

**SCREENING REPORT FOR AN ENVIRONMENTAL AUTHORIZATION AS  
REQUIRED BY THE 2014 EIA REGULATIONS – PROPOSED SITE  
ENVIRONMENTAL SENSITIVITY**

**EIA Reference number:** (NC) 30/5/1/1/3/2/1 (14410) PR

**Project name:** Sandgat Prospecting Right and EA

**Project title:** Sandgat Prospecting Right and EA

**Date screening report generated:** 19/05/2026 16:39:38

**Applicant:** Black Mountain Mining (Pty) Ltd

**Compiler:** Environmental Impact Management Services (Pty) Ltd

**Compiler signature:**



**Application Category:** Mining|Prospecting rights

## Table of Contents

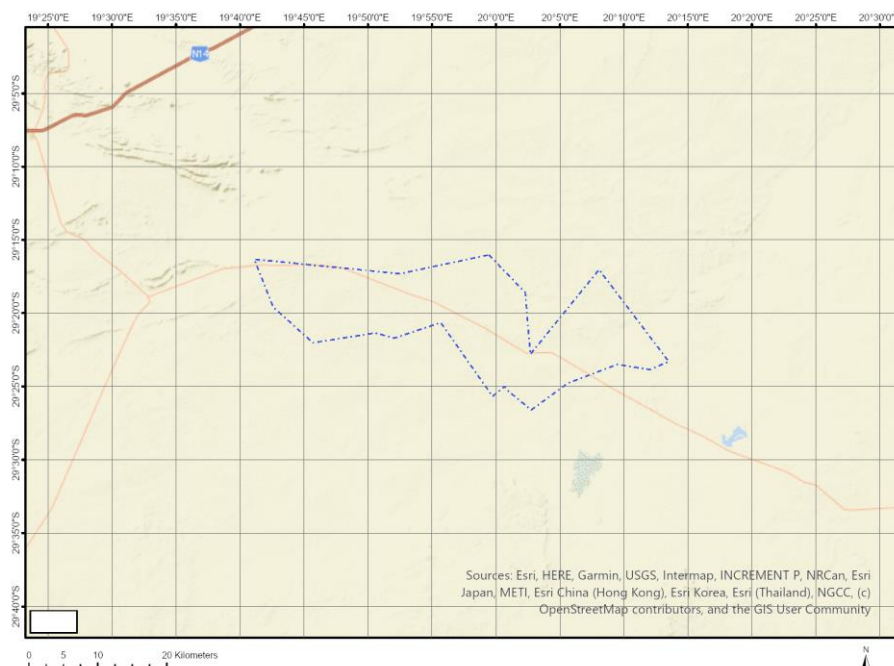
Proposed Project Location .....	3
Orientation map 1: General location .....	3
Map of proposed site and relevant area(s) .....	4
Cadastral details of the proposed site .....	4
Wind and Solar developments with an approved Environmental Authorisation or applications under consideration within 30 km of the proposed area .....	5
Environmental Management Frameworks relevant to the application .....	6
Environmental screening results and assessment outcomes .....	6
Relevant development incentives, restrictions, exclusions or prohibitions .....	6
Proposed Development Area Environmental Sensitivity .....	7
Specialist assessments identified .....	7
Results of the environmental sensitivity of the proposed area .....	9
MAP OF RELATIVE AGRICULTURE THEME SENSITIVITY .....	9
MAP OF RELATIVE ANIMAL SPECIES THEME SENSITIVITY .....	10
MAP OF RELATIVE AQUATIC BIODIVERSITY THEME SENSITIVITY .....	11
MAP OF RELATIVE ARCHAEOLOGICAL AND CULTURAL HERITAGE THEME SENSITIVITY .....	12
MAP OF RELATIVE CIVIL AVIATION THEME SENSITIVITY .....	13
MAP OF RELATIVE DEFENCE THEME SENSITIVITY .....	14
MAP OF RELATIVE PALEONTOLOGY THEME SENSITIVITY .....	15
MAP OF RELATIVE PLANT SPECIES THEME SENSITIVITY .....	16
MAP OF RELATIVE TERRESTRIAL BIODIVERSITY THEME SENSITIVITY .....	17

## Proposed Project Location

### Orientation map 1: General location



## Map of proposed site and relevant area(s)



## Cadastral details of the proposed site

Property details:

No	Farm Name	Farm/ Erf No	Portion	Latitude	Longitude	Property Type
1	HAARTEBEEST-VLEI	199	0	29°18'14.56S	19°57'22.82E	Farm
2	WILLEMS OPDAM	220	0	29°23'30.57S	19°46'49.32E	Farm
3	LOOG KOLKJES	195	0	29°29'10.71S	20°13'46E	Farm
4	LONGZIEK-VLEI	151	0	29°12'33.68S	19°59'2.33E	Farm
5	LOVEDALE	201	0	29°19'8.63S	19°45'25.99E	Farm
6	GANNA-POORT	202	0	29°19'42.71S	19°41'12.96E	Farm
7	GRAPPIES	224	0	29°24'2.01S	19°55'51.63E	Farm
8	VAAL KOP	225	0	29°21'53.06S	19°59'48.73E	Farm
9	T CAIMOEPS LAAGTE	226	0	29°28'27.21S	20°0'25.04E	Farm
10	T` OUBEP	155	0	29°18'56.58S	20°14'41.78E	Farm
11	ADJOINING GEELVLOER	197	0	29°22'40.51S	20°6'55.08E	Farm
12	GRAAF-WATER	198	0	29°18'5.38S	20°3'49.43E	Farm
13	QUAGGA-MAAG	200	0	29°19'6.58S	19°51'1.22E	Farm
14	VRAA-WEER	223	0	29°26'2.76S	19°52'46.57E	Farm
15	VAAL KOP	225	1	29°20'45.01S	19°59'7.02E	Farm Portion
16	ADJOINING GEELVLOER	197	0	29°20'32.43S	20°6'3.5E	Farm Portion
17	ADJOINING GEELVLOER	197	2	29°21'10.34S	20°9'29.33E	Farm Portion
18	GRAAF-WATER	198	1	29°18'31.12S	20°5'7.7E	Farm Portion
19	QUAGGA-MAAG	200	0	29°19'6.58S	19°51'1.22E	Farm Portion
20	ADJOINING GEELVLOER	197	4	29°21'52.27S	20°6'43.38E	Farm Portion
21	ADJOINING GEELVLOER	197	5	29°25'6.81S	20°6'57.85E	Farm Portion
22	ADJOINING	197	6	29°23'42.26S	20°3'3.65E	Farm Portion

	GEELVLOER					
23	ADJOINING GEELVLOER	197	8	29°18'54.54S	20°8'55.74E	Farm Portion
24	GRAAF-WATER	198	0	29°17'41.48S	20°2'36.73E	Farm Portion
25	LONGZIEK-VLEI	151	0	29°11'49.61S	20°0'57.18E	Farm Portion
26	LONGZIEK-VLEI	151	2	29°14'5.16S	19°55'2.14E	Farm Portion
27	VAAL KOP	225	0	29°21'53.35S	19°59'47.72E	Farm Portion
28	WILLEMS OPDAM	220	0	29°23'30.57S	19°46'49.32E	Farm Portion
29	GRAPPIES	224	0	29°25'15.49S	19°57'0.07E	Farm Portion
30	GRAPPIES	224	1	29°22'42.39S	19°54'37.49E	Farm Portion
31	T CAIMOEPS LAAGTE	226	4	29°27'21.03S	19°59'34.68E	Farm Portion
32	GANNA-POORT	202	0	29°19'42.71S	19°41'12.96E	Farm Portion
33	VRAA-WEER	223	1	29°24'36.6S	19°51'42.22E	Farm Portion
34	T` OUBEP	155	7	29°18'28.71S	20°12'7.29E	Farm Portion
35	T` OUBEP	155	5	29°19'17.07S	20°12'34.18E	Farm Portion
36	T` OUBEP	155	4	29°20'6.34S	20°13'26.37E	Farm Portion
37	LOOG KOLKJES	195	2	29°25'36.03S	20°12'43.91E	Farm Portion
38	ADJOINING GEELVLOER	197	1	29°22'47.35S	20°10'17.29E	Farm Portion
39	ADJOINING GEELVLOER	197	3	29°24'39.99S	20°4'23.73E	Farm Portion
40	HAARTEBEEST-VLEI	199	0	29°18'14.56S	19°57'22.82E	Farm Portion
41	LOVEDALE	201	0	29°19'8.63S	19°45'25.99E	Farm Portion
42	T` OUBEP	155	10	29°21'3.85S	20°14'25.37E	Farm Portion
43	T` OUBEP	155	12	29°22'22.22S	20°15'34.89E	Farm Portion

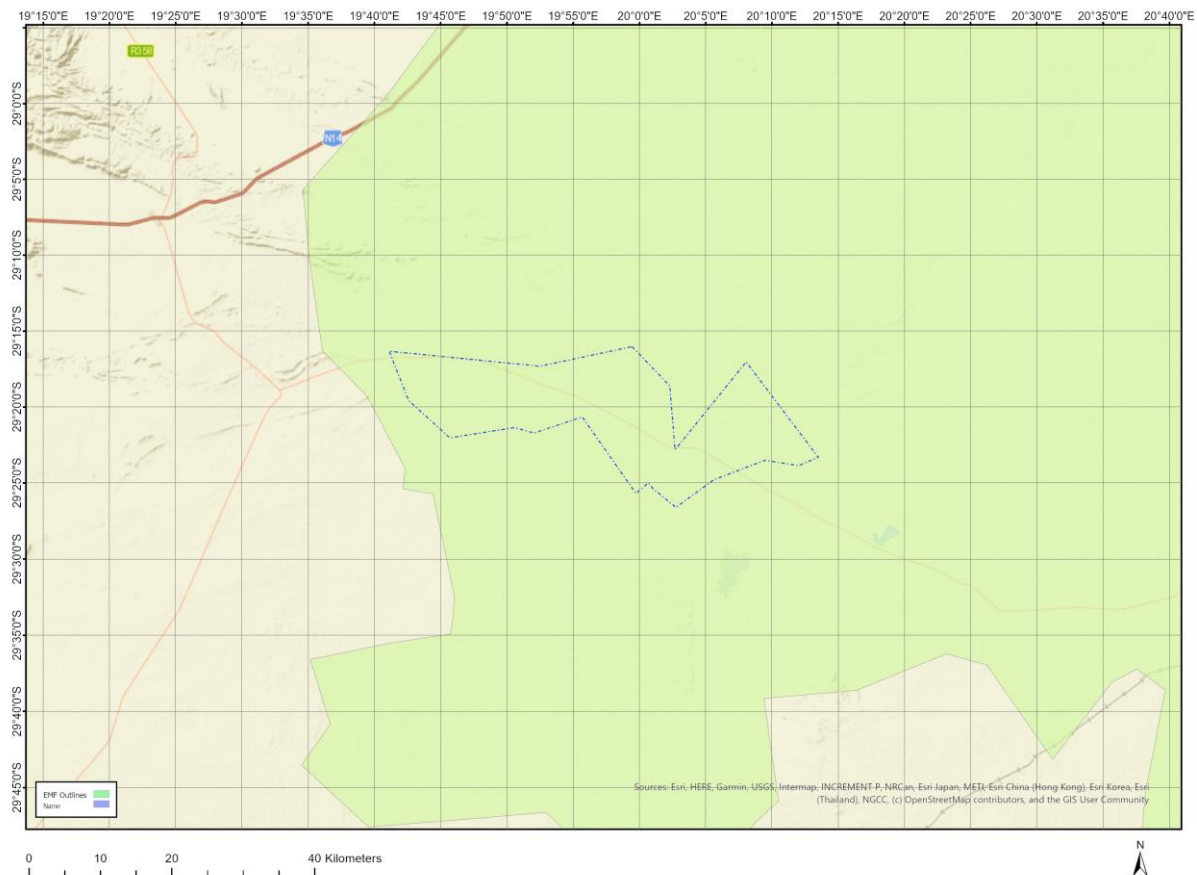
Development footprint<sup>1</sup> vertices:  
No development footprint(s) specified.

### Wind and Solar developments with an approved Environmental Authorisation or applications under consideration within 30 km of the proposed area

No	EIA Reference No	Classification	Status of application	Distance from proposed area (km)
1	14/12/16/3/3/2/2401	Solar PV	Approved	9.3
2	14/12/16/3/3/2/2151	Wind	Approved	0
3	14/12/16/3/3/2/2152	Wind	Approved	0
4	14/12/16/3/3/2/2150	Wind	Approved	0
5	14/12/16/3/3/2/1121	Solar PV	Approved	20.3
6	14/12/16/3/3/2/2400	Solar PV	Approved	29
7	14/12/16/3/3/2/2402	Solar PV	Approved	29
8	14/12/16/3/3/2/2502	Wind	Approved	15.8
9	14/12/16/3/3/2/2399	Solar PV	Approved	9.3

<sup>1</sup> "development footprint", means the area within the site on which the development will take place and includes all ancillary developments for example roads, power lines, boundary walls, paving etc. which require vegetation clearance or which will be disturbed and for which the application has been submitted.

## Environmental Management Frameworks relevant to the application



Environmental Management Framework	LINK
Siyanda District Municipality EMF	<a href="https://screening.environment.gov.za/ScreeningDownloads/EMF/SIYANDA_EMF_REPORT_2008.pdf">https://screening.environment.gov.za/ScreeningDownloads/EMF/SIYANDA EMF REPORT 2008.pdf</a>

## Environmental screening results and assessment outcomes

The following sections contain a summary of any development incentives, restrictions, exclusions or prohibitions that apply to the proposed development site as well as the most environmental sensitive features on the site based on the site sensitivity screening results for the application classification that was selected. The application classification selected for this report is:

**Mining | Prospecting rights.**

### Relevant development incentives, restrictions, exclusions or prohibitions

The following development incentives, restrictions, exclusions or prohibitions and their implications that apply to this site are indicated below.

Incentive, restriction or prohibition	Implication
Strategic Transmission Corridor-Northern	<a href="https://screening.environment.gov.za/ScreeningDownloads/Developmen">https://screening.environment.gov.za/ScreeningDownloads/Developmen</a>

corridor	<a href="#">tZones/Combined_EGI.pdf</a>
Augrabies Falls National Park Buffer	<a href="https://screening.environment.gov.za/ScreeningDownloads/DevelopmentZones/AFNP_Management_Plan.pdf">https://screening.environment.gov.za/ScreeningDownloads/DevelopmentZones/AFNP_Management_Plan.pdf</a>

### Proposed Development Area Environmental Sensitivity

The following summary of the development site environmental sensitivities is identified. Only the highest environmental sensitivity is indicated. The footprint environmental sensitivities for the proposed development footprint as identified, are indicative only and must be verified on site by a suitably qualified person before the specialist assessments identified below can be confirmed.

Theme	Very High sensitivity	High sensitivity	Medium sensitivity	Low sensitivity
Agriculture Theme			X	
Animal Species Theme		X		
Aquatic Biodiversity Theme	X			
Archaeological and Cultural Heritage Theme				X
Civil Aviation Theme				X
Defence Theme				X
Paleontology Theme			X	
Plant Species Theme			X	
Terrestrial Biodiversity Theme	X			

### Specialist assessments identified

Based on the selected classification, and the known impacts associated with the proposed development, the following list of specialist assessments have been identified for inclusion in the assessment report. It is the responsibility of the EAP to confirm this list and to motivate in the assessment report, the reason for not including any of the identified specialist study including the provision of photographic evidence of the site situation.

No	Specialist assessment	Assessment Protocol
1	Plant Species Assessment	<a href="https://screening.environment.gov.za/ScreeningDownloads/AssessmentProtocols/Gazetted_Plant_Species_Assessment_Protocols.pdf">https://screening.environment.gov.za/ScreeningDownloads/AssessmentProtocols/Gazetted_Plant_Species_Assessment_Protocols.pdf</a>
2	Animal Species Assessment	<a href="https://screening.environment.gov.za/ScreeningDownloads/AssessmentProtocols/Gazetted_Animal_Species_Assessment_Protocols.pdf">https://screening.environment.gov.za/ScreeningDownloads/AssessmentProtocols/Gazetted_Animal_Species_Assessment_Protocols.pdf</a>
3	Agricultural Impact Assessment	<a href="https://screening.environment.gov.za/ScreeningDownloads/AssessmentProtocols/Gazetted_General_Agriculture_Assessment_Protocols.pdf">https://screening.environment.gov.za/ScreeningDownloads/AssessmentProtocols/Gazetted_General_Agriculture_Assessment_Protocols.pdf</a>
4	Archaeological and Cultural Heritage Impact Assessment	<a href="https://screening.environment.gov.za/ScreeningDownloads/AssessmentProtocols/GuidanceforHIA.pdf">https://screening.environment.gov.za/ScreeningDownloads/AssessmentProtocols/GuidanceforHIA.pdf</a>
5	Palaeontology Impact Assessment	<a href="https://screening.environment.gov.za/ScreeningDownloads/AssessmentProtocols/GuidanceforPIA.pdf">https://screening.environment.gov.za/ScreeningDownloads/AssessmentProtocols/GuidanceforPIA.pdf</a>
6	Terrestrial Biodiversity Impact Assessment	<a href="https://screening.environment.gov.za/ScreeningDownloads/AssessmentProtocols/Gazetted_Terrestrial_Biodiversity_Assessment_Protocols.pdf">https://screening.environment.gov.za/ScreeningDownloads/AssessmentProtocols/Gazetted_Terrestrial_Biodiversity_Assessment_Protocols.pdf</a>

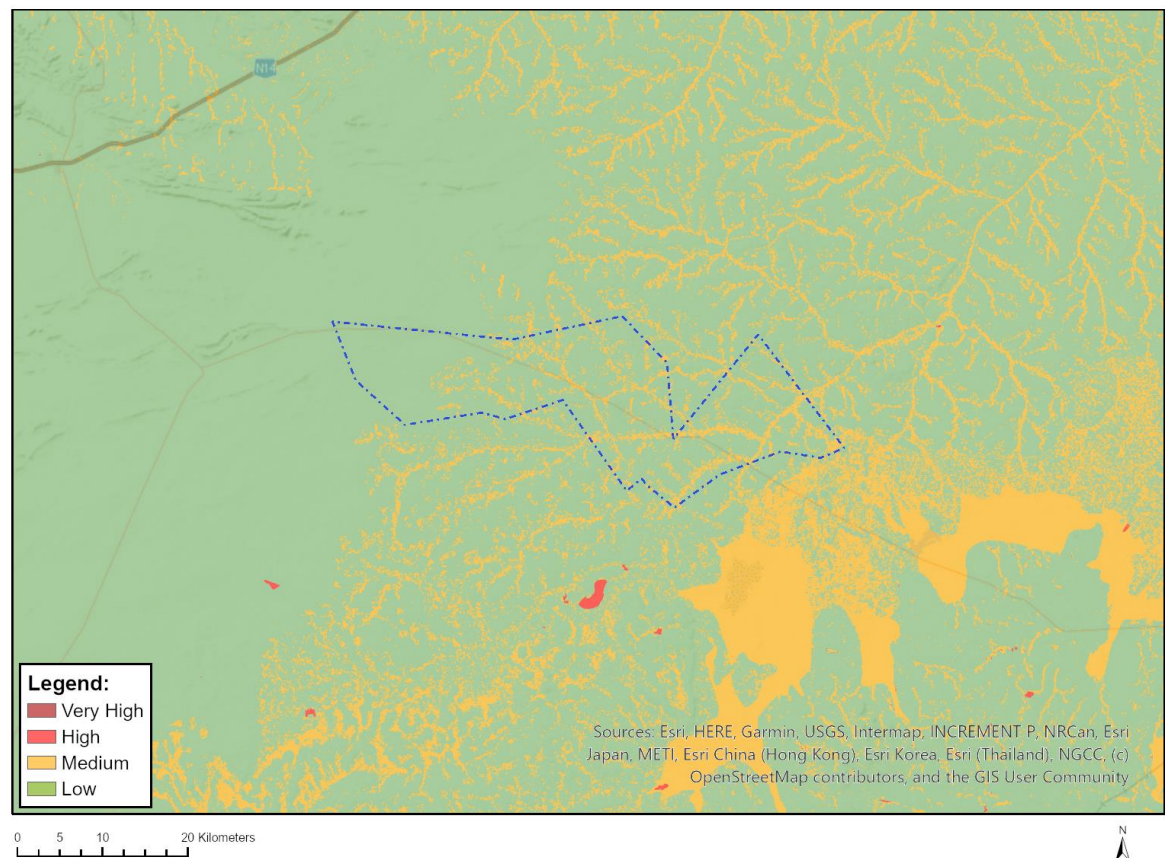
7	Aquatic Biodiversity Impact Assessment	<a href="https://screening.environment.gov.za/ScreeningDownloads/AssessmentProtocols/Gazetted_Aquatic_Biodiversity_Assessment_Protocols.pdf">https://screening.environment.gov.za/ScreeningDownloads/AssessmentProtocols/Gazetted_Aquatic_Biodiversity_Assessment_Protocols.pdf</a>
8	Noise Impact Assessment	<a href="https://screening.environment.gov.za/ScreeningDownloads/AssessmentProtocols/Gazetted_Noise_Impacts_Assessment_Protocol.pdf">https://screening.environment.gov.za/ScreeningDownloads/AssessmentProtocols/Gazetted_Noise_Impacts_Assessment_Protocol.pdf</a>
9	Radioactivity Impact Assessment	<a href="https://screening.environment.gov.za/ScreeningDownloads/AssessmentProtocols/Gazetted_General_Requirement_Assessment_Protocols.pdf">https://screening.environment.gov.za/ScreeningDownloads/AssessmentProtocols/Gazetted_General_Requirement_Assessment_Protocols.pdf</a>



# Results of the environmental sensitivity of the proposed area.

The following section represents the results of the screening for environmental sensitivity of the proposed site for relevant environmental themes associated with the project classification. It is the duty of the EAP to ensure that the environmental themes provided by the screening tool are comprehensive and complete for the project. Refer to the disclaimer.

## MAP OF RELATIVE AGRICULTURE THEME SENSITIVITY

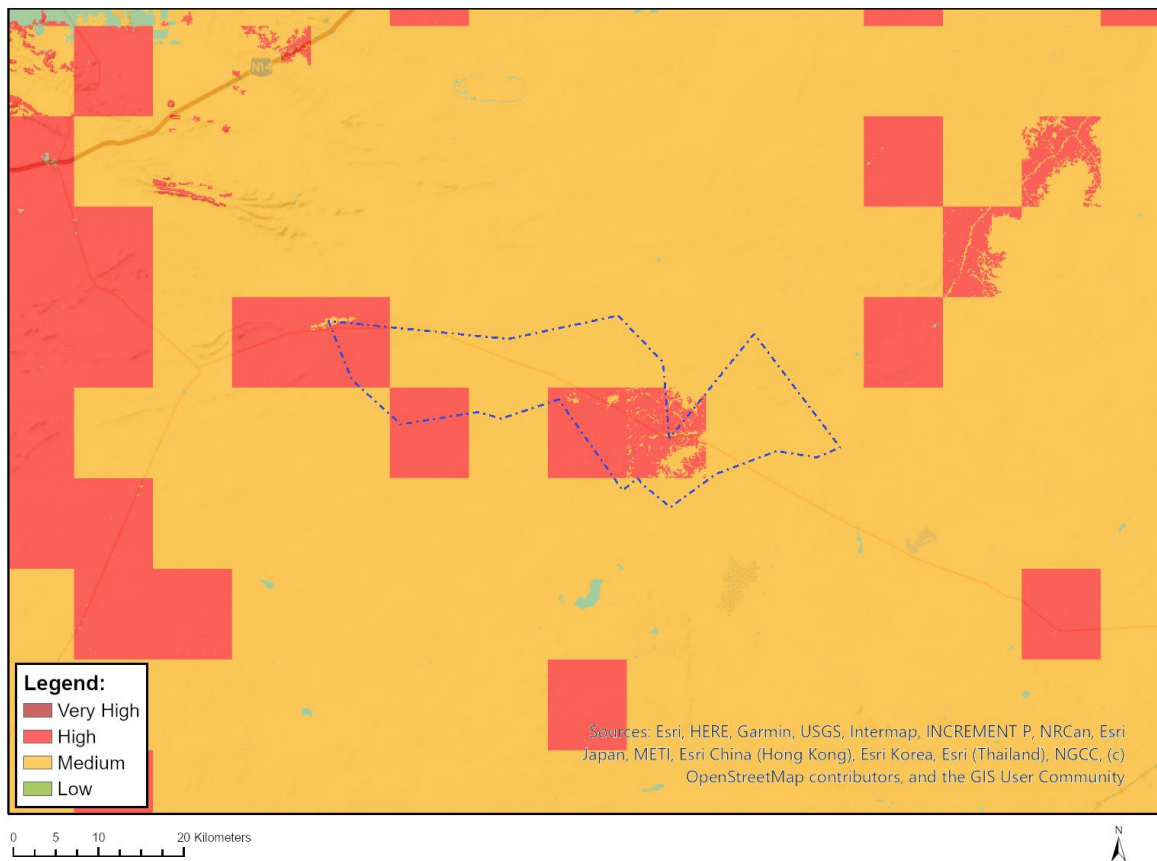


Very High sensitivity	High sensitivity	Medium sensitivity	Low sensitivity
		X	

### Sensitivity Features:

Sensitivity	Feature(s)
Low	05. Low
Low	04. Low-Very low
Low	02. Very low
Low	03. Low-Very low
Medium	06. Low-Moderate
Medium	07. Low-Moderate

## MAP OF RELATIVE ANIMAL SPECIES THEME SENSITIVITY



Where only a sensitive plant unique number or sensitive animal unique number is provided in the screening report and an assessment is required, the environmental assessment practitioner (EAP) or specialist is required to email SANBI at [eiadatarequests@sanbi.org.za](mailto:eiadatarequests@sanbi.org.za) listing all sensitive species with their unique identifiers for which information is required. The name has been withheld as the species may be prone to illegal harvesting and must be protected. SANBI will release the actual species name after the details of the EAP or specialist have been documented.

Very High sensitivity	High sensitivity	Medium sensitivity	Low sensitivity
	X		

### Sensitivity Features:

Sensitivity	Feature(s)
High	Aves-Falco biarmicus
High	Aves-Cursorius rufus
Low	Subject to confirmation
Medium	Aves-Neotis ludwigii
Medium	Aves-Sagittarius serpentarius

MAP OF RELATIVE AQUATIC BIODIVERSITY THEME SENSITIVITY

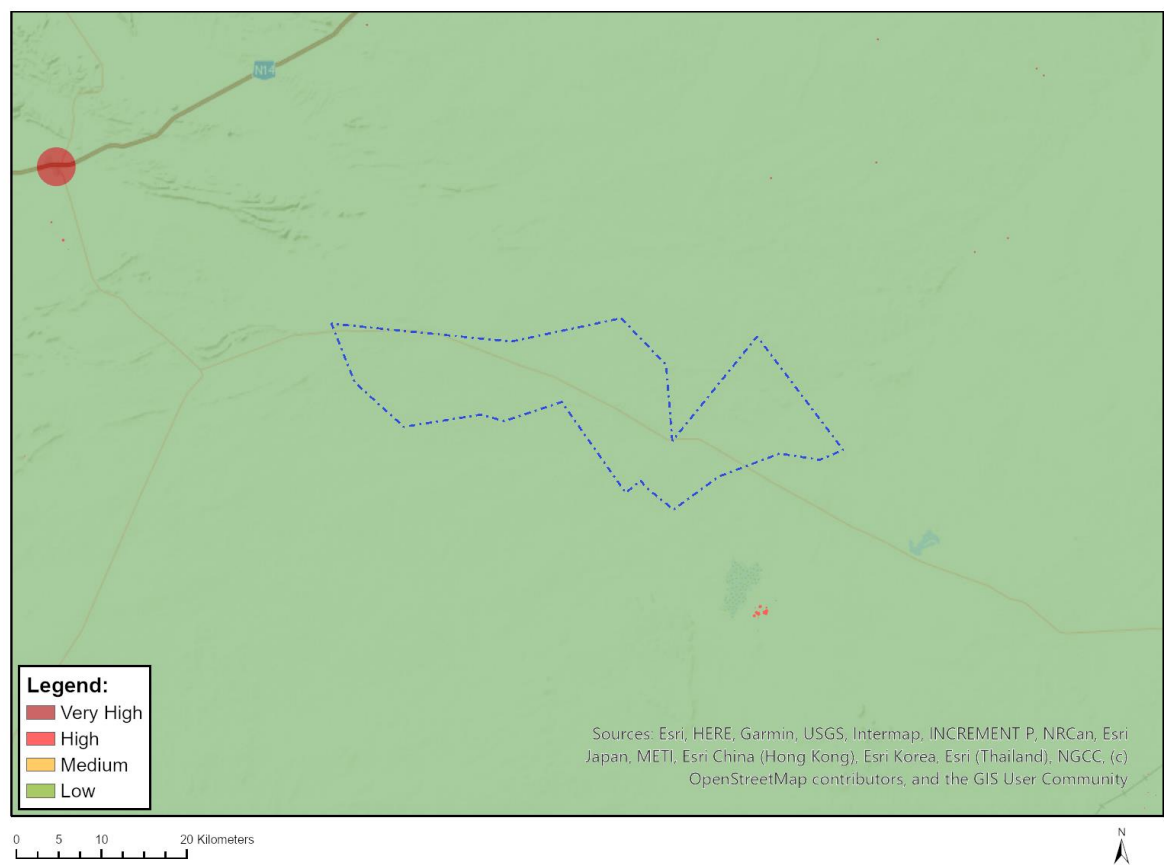


Very High sensitivity	High sensitivity	Medium sensitivity	Low sensitivity
X			

Sensitivity Features:

Sensitivity	Feature(s)
Low	Low Sensitivity
Very High	Wetlands_Depression
Very High	Wetlands_River
Very High	FEPA Subcatchment
Very High	Rivers

# MAP OF RELATIVE ARCHAEOLOGICAL AND CULTURAL HERITAGE THEME SENSITIVITY

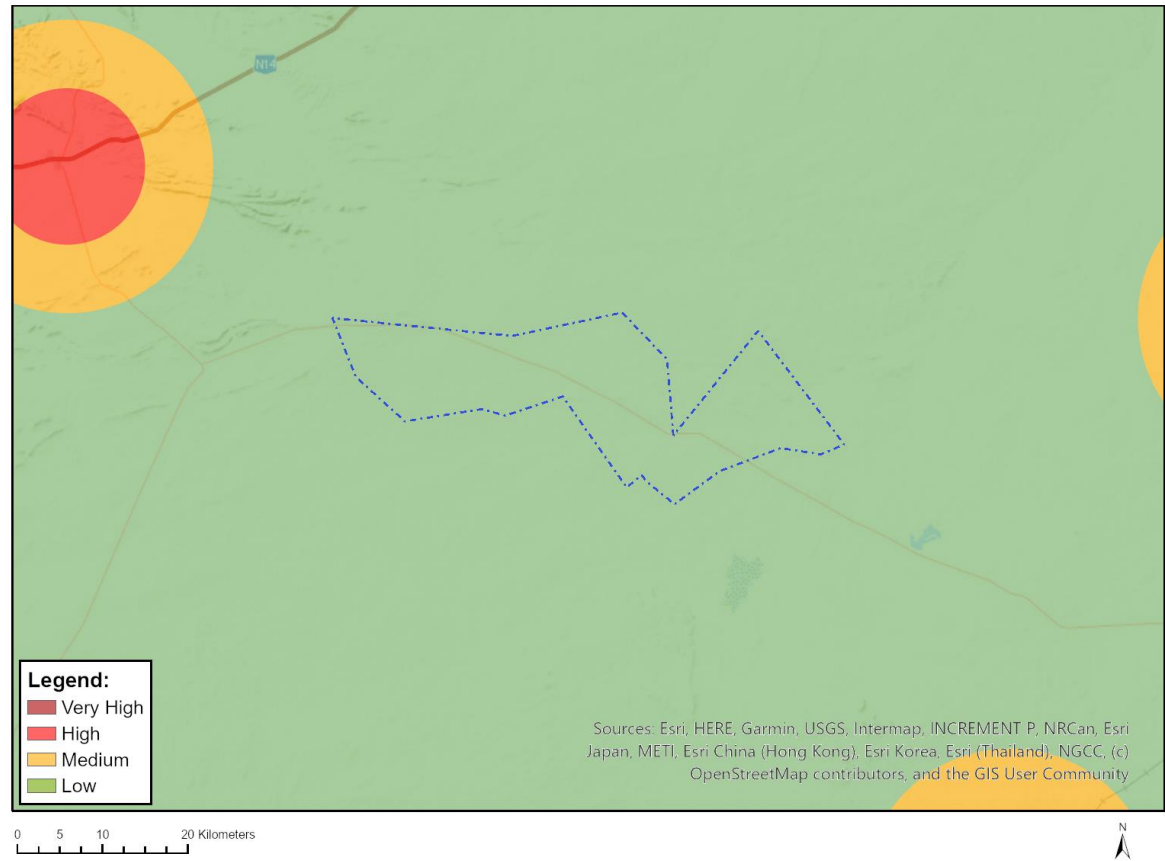


Very High sensitivity	High sensitivity	Medium sensitivity	Low sensitivity
			X

## Sensitivity Features:

Sensitivity	Feature(s)
Low	Low Sensitivity

# MAP OF RELATIVE CIVIL AVIATION THEME SENSITIVITY

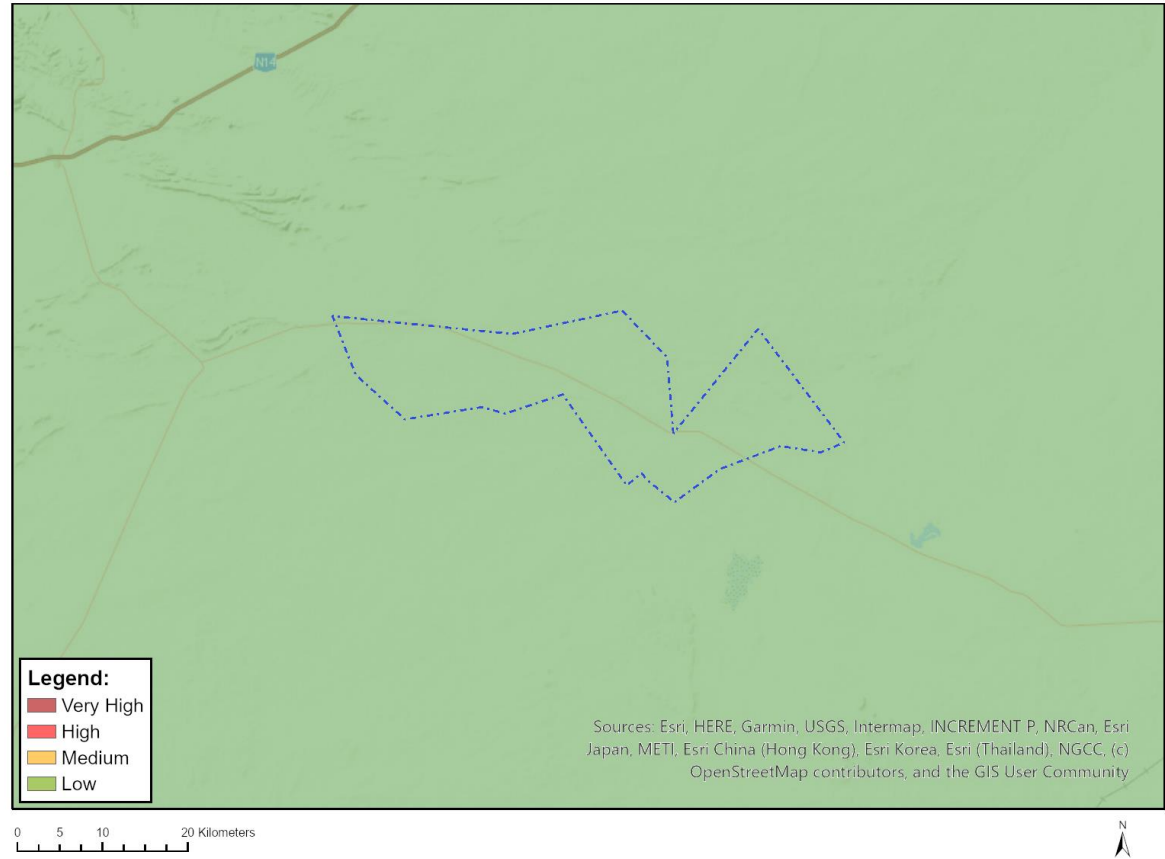


Very High sensitivity	High sensitivity	Medium sensitivity	Low sensitivity
			X

## Sensitivity Features:

Sensitivity	Feature(s)
Low	Low sensitivity

MAP OF RELATIVE DEFENCE THEME SENSITIVITY



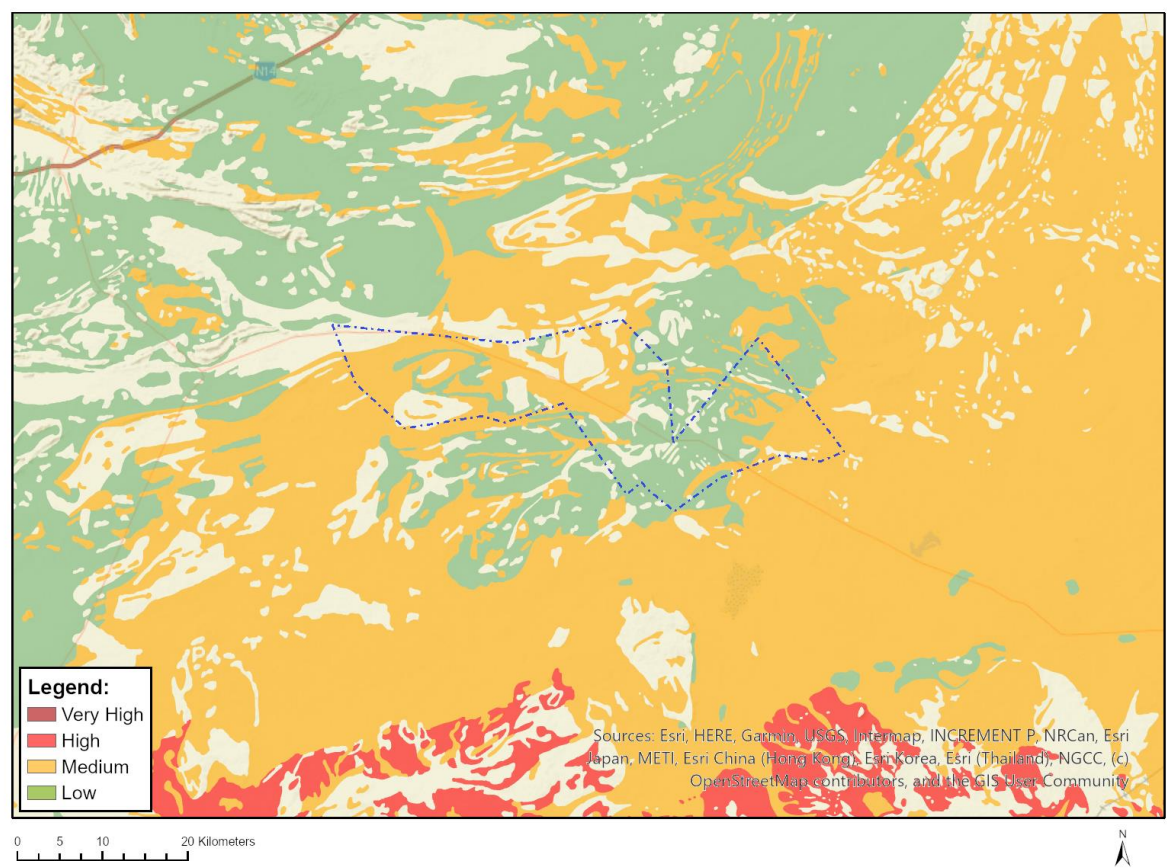
Very High sensitivity	High sensitivity	Medium sensitivity	Low sensitivity
			X

Sensitivity Features:

Sensitivity	Feature(s)
Low	Low Sensitivity



MAP OF RELATIVE PALEONTOLOGY THEME SENSITIVITY

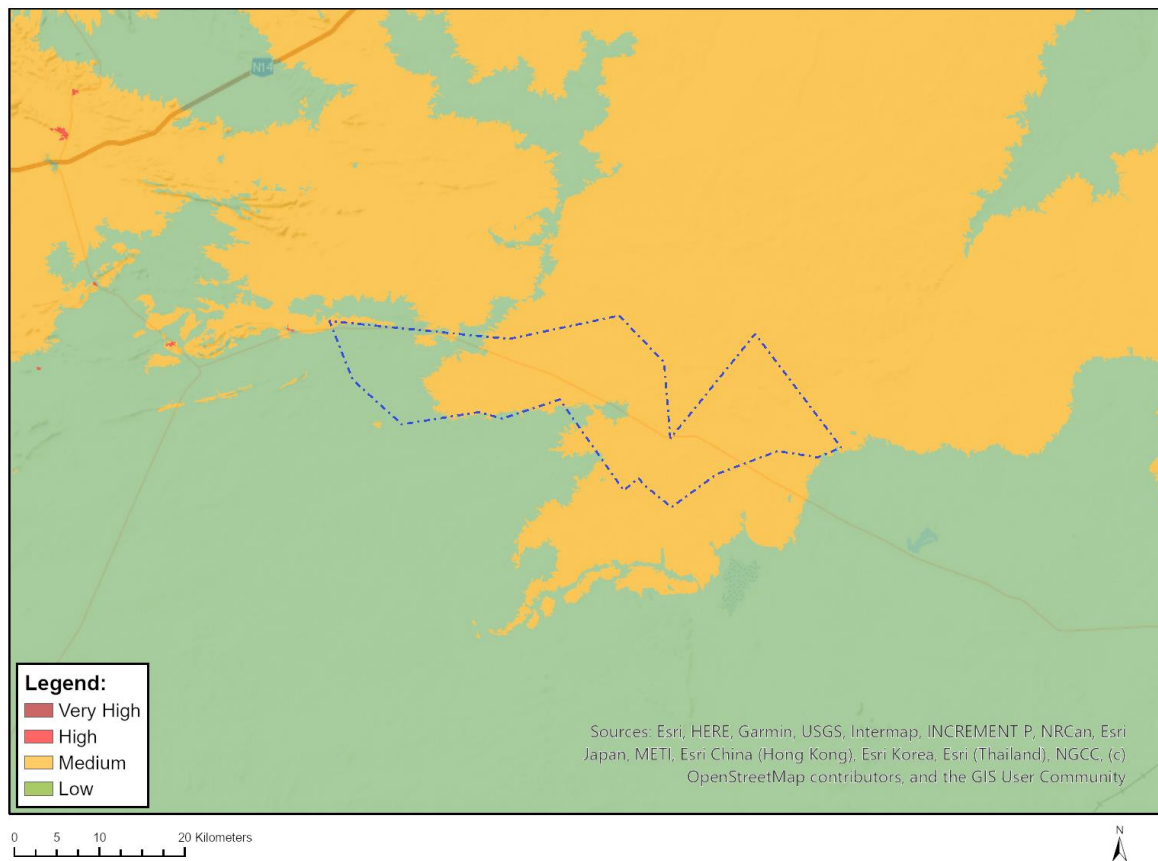


Very High sensitivity	High sensitivity	Medium sensitivity	Low sensitivity
		X	

Sensitivity Features:

Sensitivity	Feature(s)
Low	Features with a Low paleontological sensitivity
Medium	Features with a Medium paleontological sensitivity

## MAP OF RELATIVE PLANT SPECIES THEME SENSITIVITY



Where only a sensitive plant unique number or sensitive animal unique number is provided in the screening report and an assessment is required, the environmental assessment practitioner (EAP) or specialist is required to email SANBI at [eiadatarequests@sanbi.org.za](mailto:eiadatarequests@sanbi.org.za) listing all sensitive species with their unique identifiers for which information is required. The name has been withheld as the species may be prone to illegal harvesting and must be protected. SANBI will release the actual species name after the details of the EAP or specialist have been documented.

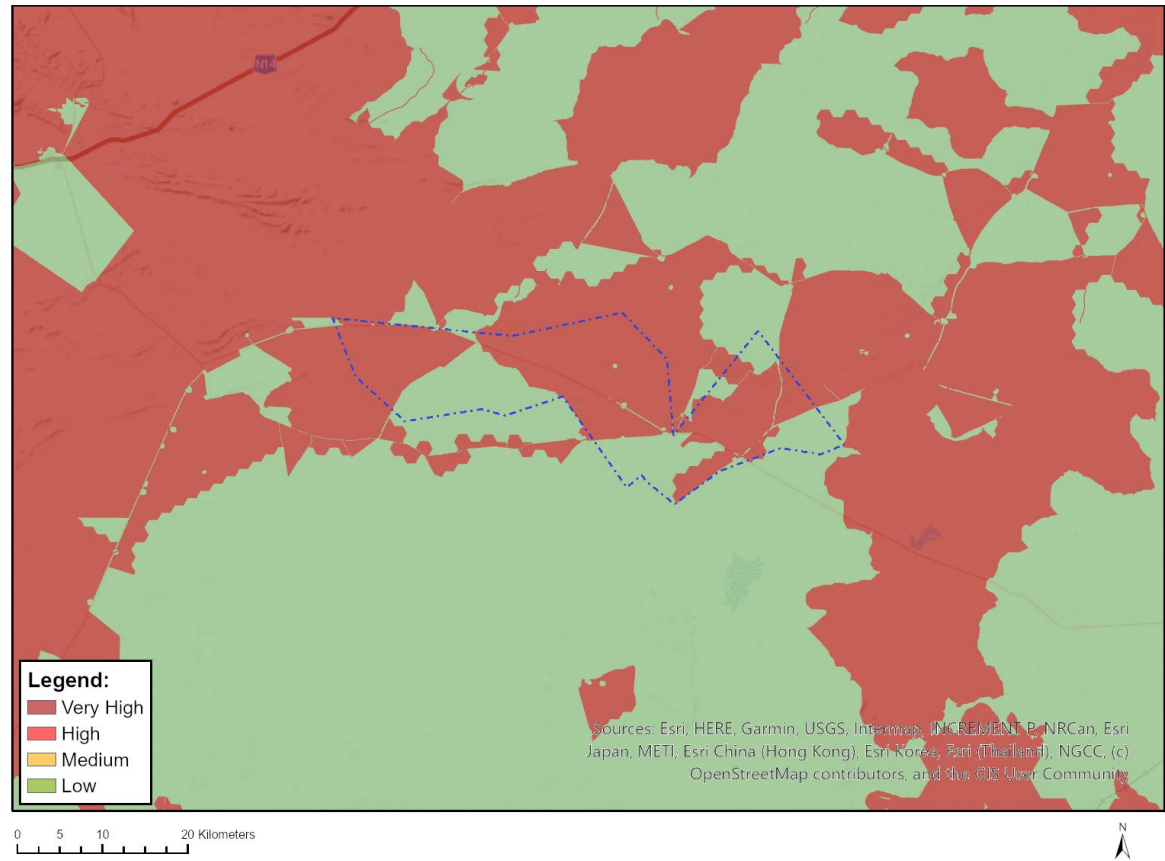
Very High sensitivity	High sensitivity	Medium sensitivity	Low sensitivity
		X	

### Sensitivity Features:

Sensitivity	Feature(s)
Low	Low Sensitivity
Medium	Sensitive species 1209
Medium	Sensitive species 545
Medium	Sensitive species 317



MAP OF RELATIVE TERRESTRIAL BIODIVERSITY THEME SENSITIVITY



Very High sensitivity	High sensitivity	Medium sensitivity	Low sensitivity
X			

Sensitivity Features:

Sensitivity	Feature(s)
Low	Low Sensitivity
Very High	CBA 1
Very High	CBA 2
Very High	ESA
Very High	FEPA Subcatchment